



Automatic measurement,
Documentation,
Alarm,
Intervention



Temperature: 25,2° C
Humidity: 45 %
Pressure: 1013,4 kPa
Air-Speed: 0 m/s
Water alarm: 0
Pump: ON



IP Thermo

Intelligent climate control system



THE SOFTWARE OF THE SYSTEM: IPTHERMO FOR WINDOWS



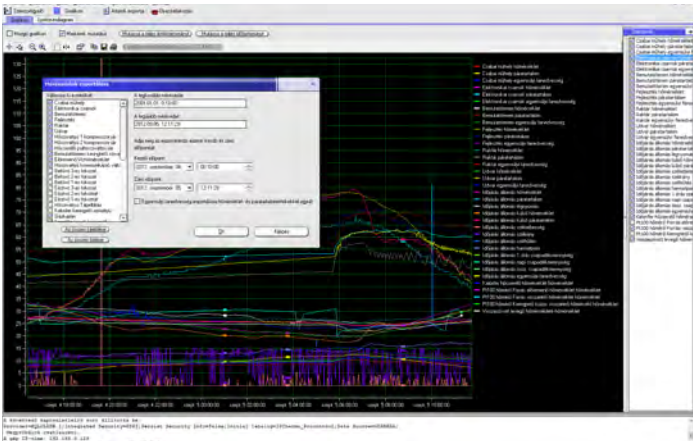
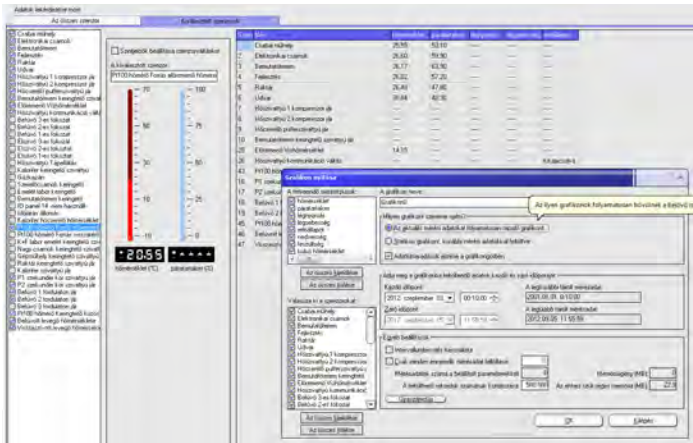
- WLAN INTERNET
- IP-based intelligent measuring system with web remote control
- Measured values are published on a web page

The IPThermo climate supervisor and controller software serves the management and supervision of the buildings, offices, hotels. The software is in a permanent connection with the sensors of the building and the measured data are adjusted periodically on a server record. The program has built-in web server, which allows you to see more meter data on one website.

- IPThermo measuring, documentation and centralized alert in case you limit values are exceeded
- The start of the automatic interventions are programmable (for example: switching on the air conditioner)

Features of the IPThermo software for Windows:

- Monitoring and logging of the sensors
- Ethernet and RS485 network sensor management
- Second precision controlled logging and sampling density
- Display and analysis of measured and stored data on graphs, spectograms
- Microsoft SQL server and local Microsoft database support
- Exporting and importing database: Excel, HTML, Word or a simple test format
- 128 bit encryption with DES algorithm
- E-mail alerts, SMS sender tool
- Monitoring and data recording mode
- Control of interventions, events, for example: switching on the cooling system
- Monitoring with mobile phone (optional)



	Mérés ideje	hőmérséklet (°C)	páratartalom (%)	relállapot (fő: légnyomás (kpa)	szélsebesség (m/s)
1. Csabai műhely	2012-09-05 13:42:48	26,07	52,2		
2. Elektronikai csarnok	2012-09-05 13:42:48	27,25	53,7		
3. Bemutatóterem	2012-09-05 13:42:48	26,57	59,1		
4. Fejlesztés	2012-09-05 13:42:48	26,91	53,7		
5. Raktár	2012-09-05 13:42:48	26,2	45,2		
6. Udvar	2012-09-05 13:42:48	32,41	34,7		
7. Hőszivattyú 1 kompresszor jár	2012-09-05 12:06:27			1	

- Automatic centralized management of the measured data
- Documentation, monitoring, logging, graphing
- Reliable IP-based data transmission
- User-friendly software



CLIMATE CONTROLLING TROUGH INTERNET

The uninterrupted climate control of server rooms is extremely important, because the expensive equipments and instruments used need the optimal temperature and humidity. In case of water detection the prompt reaction and intervention is necessary. The IPThermo system supervises the threshold limits, and in case of exceeding the limit, alarms via E-mail or SMS, while records the measured values centrally.

The IP Thermo product family enables you to remote an object temperature, humidity, etc. monitoring through Internet. The IPThermo devices form an Internet-measurement system together with the connected probes. The sensors transmit the measured values to the base IPThermo device (that have an own IP address) in which the informations can be checked via Ethernet network. The Ethernet connection allows the publication, logging and graphical display of the measured values or the using in a self-developed program. In case of threshold limit exceeding it is available to send an E-mail or SMS alarm and activate an event, eg. the system can switch on/off every connected (air-conditioning, heating, etc.) device.

Features:

- Web remote access, IP-based smart metering system
- Automatic centralized measurement
- Measured values are central automated monitoring, logging, graphing
- Temperature, humidity, air pressure, air velocity, voltage measurement, water detection etc. sensors are available
- Reliable monitoring
- Measured values are published on a web page
- Limit monitoring, E-mail / SMS / PC Alarm
- Intervention with relay control, power-authorization
- Status and system error alarm - Watchdog function
- Off-line, Stand-alone and/or online operation without PC
- Calibration with standard thermometer accredited by the National Accreditation Board
- Validatable software
- Depending on the model, Telnet, Web, http, TCP port, SNMP protocol, PDD, UDP port is available for easy system integration

- Data Storage and Alarm In Case of Switched Off PC
- The standard and special sensors can be flexible combined
- Uninterruptible measurement data recording in case of temporary interruption of the data connection
- Time Saving with the Automated Measurement Data Recording
- Status- and System Error Alarm – Watchdog Function
- Any PT100 Standard Probe can be attached

Connectable Sensors:

- Temperature
- Humidity
- Air-pressure
- Air-speed
- Water Detection & Flooding Alert Sensor
- Voltmeter
- Relay Status Monitoring, Door Opening Detection
- Vacuum
- Smoke Alarm
- Fire Alarm
- Equilibrium Moisture Content of Wood
- PT-100 Standard Probe

The possibilities are almost endless, the IPThermo sends measured data of the optional **PT-100** standard probe to the PC.

Available special measurements with integrated WeatherStation device:

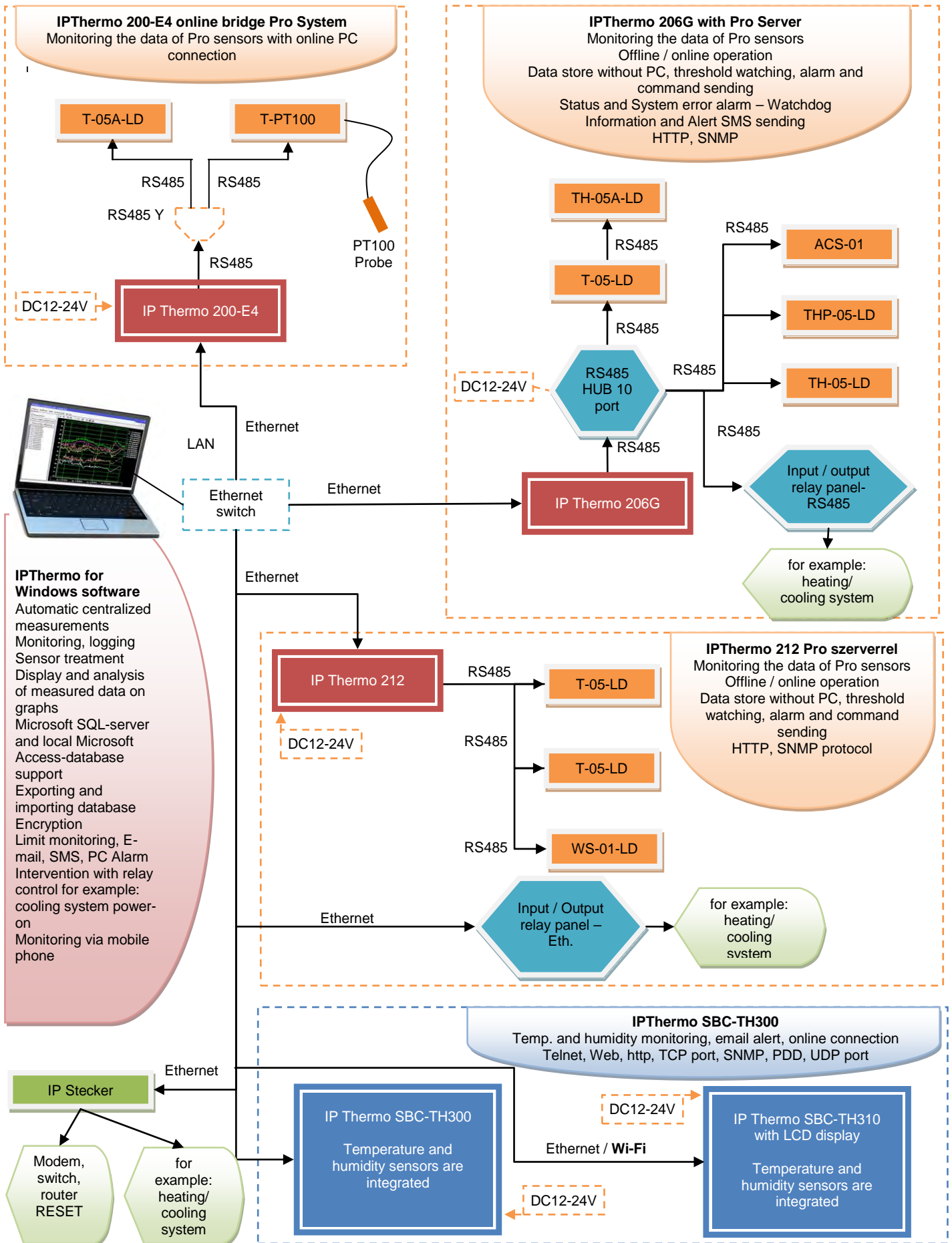
- Wind speed
- Direction of Wind
- Windchill
- Dew-point
- 1 Hour / Day / Total Rainfall

- Threshold limit supervision
- Alarm on PC, E-mail, SMS to the supervisor
- Intervention with relay control, power authorization

- Accurate, uninterrupted measurement
- Many sensor versions are available
- With the automatic registration of measured data provides security and saves time.



SYSTEM OVERVIEW





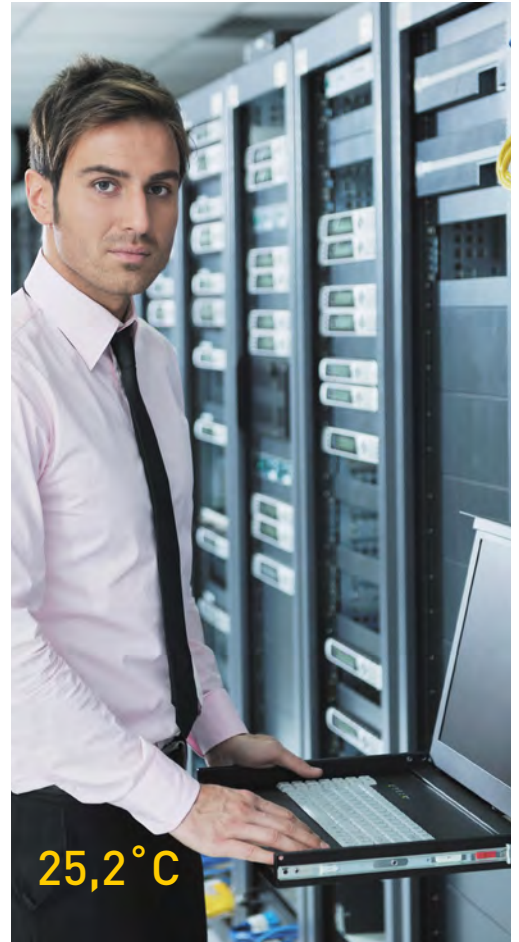
FIELDS OF APPLICATION



33,2°C
33 %
1013,4 kPa
0 m/s

Fields of application:

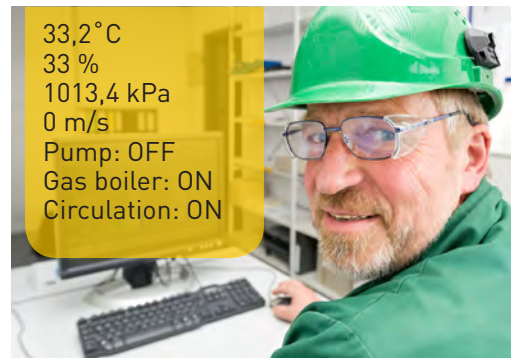
- Server rooms, intelligent building management
- Production, manufacturing, research and development, building trade, building technology, quality assurance
- Monitoring of the measurement data in the food industry- HACCP automatic documentation
- Food factory, Restaurant-, Industrial Kitchen
- Climate Control of Super-, and Hypermarkets, Shopping Malls
- Pharmaceutical Company, Pharmacy, Hospital, Clinic
- Press, Museums, Libraries



25,2°C



17,9°C
80 %



33,2°C
33 %
1013,4 kPa
0 m/s
Pump: OFF
Gas boiler: ON
Circulation: ON



29,2°C
55 %
Dehumidifier: ON



22,3°C
48 %
Cooling: ON

Hungarian Development - Hungarian Fund

In the Procontrol's laboratory developed and manufactured IPThermo system is extensible with special building management items. We await your request.

REMOTE MONITORING DEVICES

OEM kits, moduls
www.procontrol.hu

IP Stecker®

Controllable power socket trough internet, with own IP address

- Ethernet, USB
- 19" Rack modul or desktop version
- Web, Telnet, WAP, SNMP, Remote control with command , PCSW
- Remote modem, Router, Switch, RESET
- Reset of the remote servers
- Measurement and icensing of periodic services (HOSTING)
- Switch off/on of the remote devices
- Event log,pinger function



230V WITH ONE CLICK!



ProxerStecker®

Access licensing with RFID cards
Connectable via Ethernet, Terminal
Power socket,authority, treatment, event log

Power only with RFID CARD



IP Thermo®

Controllable meter devices trough internet, with own IP address

- Measured data monitoring, logging, data storage, graphing
- Measurement of temperature and automatized central documentation
- Treshold watching, alarm on PC
- Pop-Up window, e-mail, SMS alert
- Intervention with relay control, power-authorization
- Status and system error alarm - Watchdog
- Without PC, stand alone and/or online operation
- Connectable sensors: temperature, humidity, pressure, air speed, water-inrush, voltage, door-opening, etc.
- Applying: server rooms, intelligent building management, quality assurance, HACCP documentation

- TEMPERATURE: 29 C
- ALARM! THE TEMPERATURE EXCEEDED THE LIMIT!
- COOLING: ON



PROCONTROL
ELECTRONICS

Procontrol Electronics Ltd.
www.procontrol.hu

The new IPThermo NET SBC-TH300 Heat- and Humidity Meter



Ethernet, Wi-fi Interface
Designed Construction
Own IP Address
E-Mail Alarm
Integrated Webserver
Adjustable Parameters
Can be controlled trough Internet
Measurement Accuracy:
 $\pm 0,3^{\circ}\text{C}$

www.ipthermo.hu

www.procontrol.hu

Procontrol Elektronika Kft.
Tel: +36 62 444-007
Email: info@procontrol.hu

www.procontrol.hu

PROCONTROL
ELECTRONICS

A FEJLŐDÉS ÚTJA